



Coleshill C of E Primary School

Inspiring our children to flourish and enjoy 'Life in all its fullness' (John 10:10)

NEWSLETTER

27th May 2022

Volume 5, Issue 34

Happy half term!

We would like to wish all our school community a safe and enjoyable half term break—we hope everyone enjoys the platinum jubilee celebrations! We look forward to seeing you back in school on Monday 6th June, ready for class photos.

Year 6 blast off to the National Space

Centre!

Year 6 enjoyed a special trip to the National Space Centre in Leicester this week, enjoying the UK's biggest planetarium and learning lots through the interactive exhibits.



CALENDAR DATES

Half Term holiday:

30th May—3rd June

June

6th Children return to school

6th Class photos

9th Year 3 trip

10th Bags 2 School collection

22nd Sports day: Years 1, 2, 3

23rd Year 1 trip

23rd Sports day: Early Years

24th Sports day: Year 4, 5, 6

24th Year 2 trip

27th Reception trip

27th Bake off week

July

5th Year 6 performance

6th Move up day

13th Year 5 trip

15th Year 6 leavers service and party

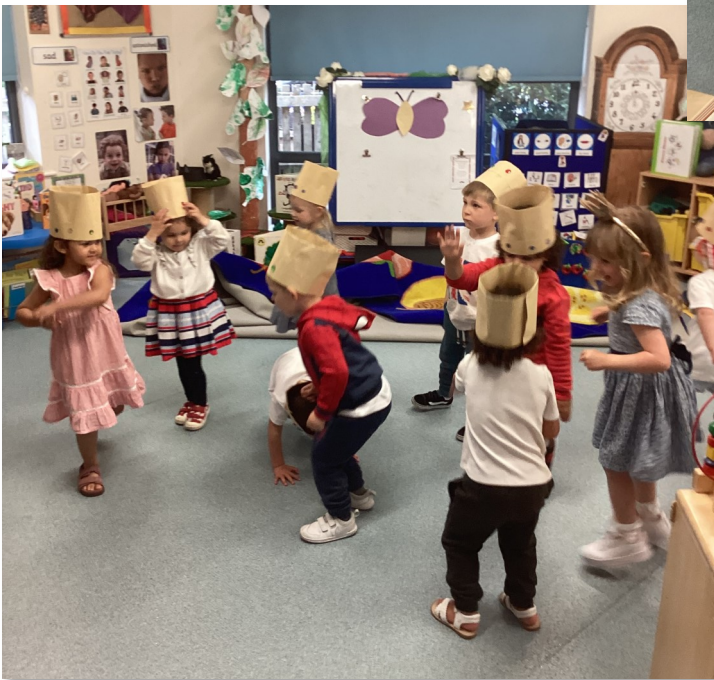
19th KS2 disco

21st Last day of term—school closes at 2pm

Jubilee Celebrations

The Queen's Platinum Jubilee is a significant event bringing the whole country together, and we were delighted to take part in a number of activities across all years groups in school. The children had a lovely day and will hopefully have some lasting memories of this once in a lifetime occasion.







Seeds of hope

As part of the jubilee celebrations, Morrison's have given us some things to give out to the children. Children will either be given 'Seeds of Hope' to take home or a paper chain to decorate and write a 'Message of Hope' on. These chains will be handed back to Morrison's who will send them to care homes to spread the messages of hope.

Goodbye and Good Luck

We bid a fond farewell to Mrs Hulme and Miss Wilkinson today. Mrs Hulme is leaving us after over 12 years working in school as a Midday Supervisor. Miss Wilkinson has been a valued member of the Teaching Assistant team. Thank you both for everything you have done to support all the children over the years!

Mental Health Matters

This week YoungMinds have launched new community pages and content on the YoungMinds website, which can be accessed here:



https://www.youngminds.org.uk/professional/community-support?utm_source=warm_audience&utm_medium=signposting&utm_campaign=trusted_adult_soft_launch&utm_content=contacts

The pages contain lots of information and practical resources on supporting a young person with their mental health; helping you to navigate conversations about mental health and importantly, recognising the role that many community workers play as "trusted adults".

Phones in school

If your child brings a phone to school they **must** be handed in to the school office before coming into the classroom. Office staff will put them in a named envelope. They should be collected at the end of the day as your child leaves site.

Dates for your diary

Monday 6th June: the school photographer will be coming in to take class photos. Individual and sibling photos will take place again next academic year in the autumn term.

Friday 10th June—*change of date*: Collection of clothes for recycling by Bag2School to help with our fundraising efforts. Please bring your bin bags in first thing in the morning for collection.



Special Mentions - Our stars of the week!

This Week's Achievers—Well done!



Beau in Year 5 represented Coleshill TKD at the Welsh Taekwondo Championships last weekend and came second in his first competition!

He rightly felt very proud of his achievements and brought his trophy into school to show to his class so they could celebrate with him.

Congratulations and well done Beau!!



PTA newsletter

Please see further down this newsletter for forthcoming events.



Year 5 buzzing about farm visit

Year 5 had a wonderful day at the farm this week. Their focus was looking at pollination. Farmer John explained about how plants are pollinated by insects and wind. He also explained how the soil is kept nutritious by how they plant the land and how different types of worms work. We got a special presentation all about bees - their lifecycle and their symbiotic relationship with plants. The pupils played a fun game where pupils did the figure of eight wobble dance like bees do!



Car parking at Coleshill Clinic

We were disappointment to hear that staff working for South Warwickshire NHS Foundation Trust at Coleshill Clinic at the top of Wingfield Road have been experiencing incidents of verbal abuse and intimidating behaviour from parents who are using the Coleshill Clinic car park to collect or drop off their children at Coleshill C of E Primary School.



This does not match the values of kindness, respect and self control that we hold as a school community. We want to be good neighbours, so ask that - as the majority of people do - everyone behaves in a considerate way when travelling to and from school and when finding somewhere to park.

We would like to remind parents that the Coleshill Clinic car park is not a public car park, and should only be used by authorised staff and patients attending appointments. They will be working alongside Warwickshire Police to look at taking further action if these incidents of non-compliant behaviour continue.

Length of Day Consultation

During this half term we ran a consultation for extending the school day to a length which complies with the new government minimum requirement for 32.5 hours per week. The consultation closed on Friday 20th May 2022. We did not receive any comments regarding the proposed changes and therefore to ensure we are meeting the new expectations the proposal will be put in place from Thursday 8th September 2022.

From September 2022, access to the school site will be from 8:30am, the classroom doors will open at 8:35am and children must be in class by 8:45am. Classroom doors will close at 8:45am and children will be marked late if arriving after this time.

We look forward to the final half term which begins on Monday June 6th 2022 when opening and closing times will remain as they currently are until the end of the academic year. Thank you for your support as we make these changes to our school day for 2022-23.

Uniform Checks

Thank you to everyone who takes pride in how they present themselves when they come to school.

A reminder that our high expectation of uniform continues throughout the year, even on the run up to the summer holidays. Having chosen Coleshill C of E Primary School, parents are 'signing-up' to all of our expectations for school uniform. We understand that children grow out of things or items of clothing and footwear need replacing, but after the half term holiday there are still seven weeks of school left during which full school uniform should be worn. Trainers should not be worn apart from for PE outside.

We have lots of pre-loved items of school uniform along with a rail of lost property available. *If purchasing school uniform presents you with a financial challenge and your child is in receipt of the Pupil Premium, please see the office about how Pupil Premium funding can be used to support you.*

Could your child be entitled to a school meal – and more?



As the cost of living continues to rise and people's circumstances change, we want to encourage everyone to check their eligibility for **free school meals** (also known as **Pupil Premium**). This is extra funding paid to the school for children of parents in receipt of certain benefits and credits.

Across Warwickshire, thousands of pounds of Pupil Premium funding is unclaimed, meaning eligible children are missing out on the support - including equipment, resources, learning and development assistance and subsidies - that this funding can help provide.

You can check eligibility and apply easily online at
www.warwickshire.gov.uk/freeschoolmeals

Did you know?

- Being able to have a free school meal each day is a saving of up to **£12.00 a week** for parents of children in Years 3, 4, 5, and 6 - but your child can still bring a lunchbox from home if they want.
- The entitlement carries on into senior school.
- Children in receipt of benefits-related free school meals are entitled to **free or reduced charges for visits, residential trips, uniform, music lessons, swimming and other activities**.
- Children in receipt of benefits-related free school meals are eligible for **free HAF (Holiday Activities & Food) programme holiday clubs** that provide a range of activities during school holidays, as well as **funding for the holiday periods from the Warwickshire Local Welfare Scheme**.
- The school receives additional funding for children in receipt of benefits-related free school meals, which can be used in a variety of ways to support them, e.g. access to tutoring.

**If you receive any of the following benefits or credits please apply,
especially if your child is moving into Year 3
as their universal infant free school meal entitlement will end:**

- Income support
- Income-based Jobseeker's Allowance (JSA)
- Income-related employment and support allowance (ESA)
- Guarantee element of state pension credit
- Universal Credit (with an annual income of less than £7,400)
- Both income-based and contribution-based JSA/ESA if you receive the same amount for both. You should also qualify if you receive both, but the income-based amount is greater, but not if the contribution-based amount is greater.
- Families who are awarded Child Tax Credit and have an annual income assessed by HMRC to be no more than £16,190, providing there is no entitlement to Working Tax Credit* (unless in respect of a 4-week 'run-on').

* If either you or your partner are entitled to Working Tax Credit you do not qualify for free school meals, regardless of income.

Claims cannot be backdated, so you should claim sooner rather than later to access all the benefits, even if your child is in Reception, Year 1 or 2 and already receiving universal infant free school meals.

Do you need help to access food and manage your money?

www.warwickshire.gov.uk/facinghardship

Warwickshire Local Welfare Scheme

The Warwickshire Local Welfare Scheme helps the most vulnerable residents at times of unavoidable crisis when they have no other means of help.

It also administers the Household Support Fund, which provides one-off financial support for people in need as the country continues its recovery from the pandemic. It can help families with children, other vulnerable households and individuals facing hardship, to ensure that they have the support they need to afford food, energy, water bills and associated costs. To enquire or apply call the Local Welfare Scheme.



Visit: www.warwickshire.gov.uk/localwelfarescheme

**Call: 0800 408 1448
or 01926 359182**

Debt and benefits

Citizens Advice provides free, confidential, impartial and independent advice on a range of subjects, including benefits, debt, money management, consumer rights, employment and more.

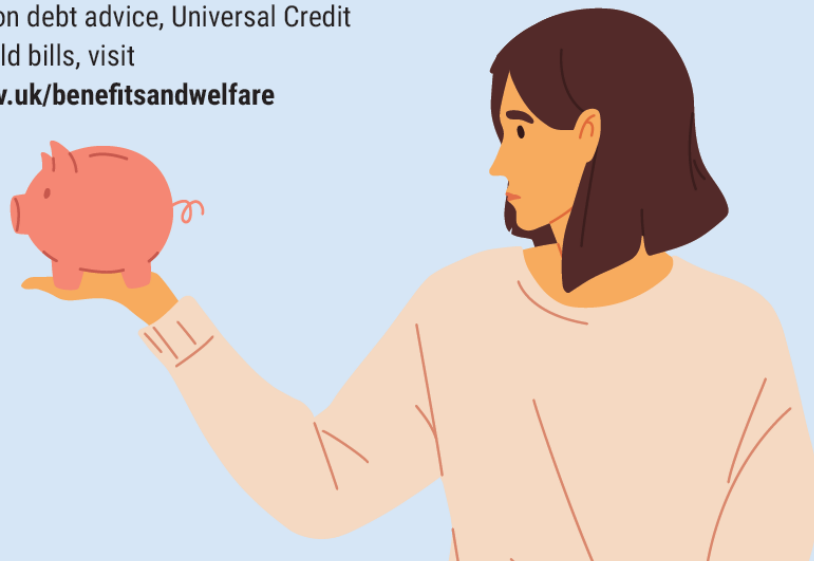
Call **0800 144 8848** or visit the website for your area:

Bedworth, Rugby and Nuneaton: **www.brancab.org.uk**

North Warwickshire: **www.nwcab.org.uk**

South Warwickshire: **www.casouthwarwickshire.org.uk**

For more information on debt advice, Universal Credit and help with household bills, visit **www.warwickshire.gov.uk/benefitsandwelfare**



Housing advice and support

Contact your local district or borough council:

North Warwickshire Borough Council
www.northwarks.gov.uk Tel: **01827 715341**

Nuneaton and Bedworth Borough Council
www.nuneatonandbedworth.gov.uk Tel: **02476 376376**

Rugby Borough Council **www.rugby.gov.uk** Tel: **01788 533533**

Stratford-on-Avon District Council **www.stratford.gov.uk**
Tel: **01789 267575**.

Warwick District Council **www.warwickdc.gov.uk**
Tel: **01926 456111**

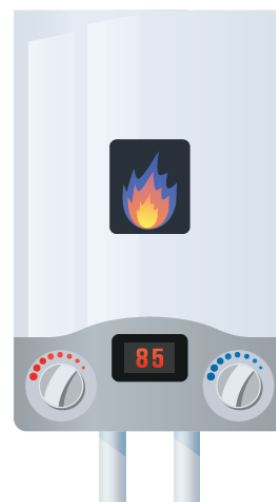


Help with household costs

If you are struggling to pay bills or manage energy debt, call the Act On Energy helpline on 0800 988 2881 or visit www.actonenergy.org.uk for advice.

Other support is available from:

- Affordable Warmth Grants www.affordablewarmthgrants.co.uk
- British Gas Energy Trust www.britishgasenergytrust.org.uk
- Council Tax Benefit www.gov.uk/council-tax-benefit
- Housing benefit www.gov.uk/housing-benefit
- Warm Home Discount Scheme
www.gov.uk/warm-home-discount-scheme



Pandemic support in your local area

Find information about local organisations, groups and agencies that provide activities, advice, services and support during the COVID-19 pandemic at www.warwickshire.gov.uk/coronavirusdirectory

Call **01926 410410** for help if you don't know where to turn and are in need of financial or emotional support.

An illustration of a family of three. A man with dark hair, wearing a maroon sweater and blue trousers, is holding a young child in a purple shirt. A woman with blonde hair, wearing a light blue cardigan over a white top and dark trousers, stands next to them, looking towards the child. The background is a solid light green.

Help for families

The Family Information Service is a one-stop shop for Warwickshire families looking for information, advice and one-to-one support on all family matters such as childcare, relationships, health, finance and special educational needs and disabilities.

Go to www.warwickshire.gov.uk/fis or call **01926 742274**

Food supply help and advice

For a range of food solutions for people who may be isolated, vulnerable or in financial crisis visit www.warwickshire.gov.uk/foodsupport

Foodbanks in Warwickshire

Food support if you are in financial difficulty. If you need a food parcel because you're unable to afford food, contact your local food bank. Find details at www.warwickshire.gov.uk/foodbanks

Free school meals

Low-income families whose children are eligible for free school meals will be offered meals for those children by their schools, during term time. Apply at www.warwickshire.gov.uk/freeschoolmeals



www.warwickshire.gov.uk/facinghardship



Coleshill Town Mini Soccer FC



Whitsun Football Fun Day 2022
9am - 3pm

Coleshill C of E Primary School
Wingfield Rd, Coleshill, Birmingham B46 3LL

Wednesday 1st June

Boys & Girls Ages 3 - 14

Children will be split into small groups based on age & friends.

FA Qualified & DBS Checked Coaches

The cost of the day is £20, Subsequent siblings £15

Please provide a packed lunch & plenty to drink.
We will be using the grass football pitches & the indoor sports hall
At 2pm there will be a presentation for all the children
where they will receive their trophy,
where parents are encouraged to come and watch
extra opportunities to win individual awards throughout the day.

If you would like to book a place for your child, please text

Child's name + B46 to **07758752033**

If you have any other queries, please contact us.

Also, Very Popular Weekly Saturday Classes Available

IMPORTANT WASH CARE INSTRUCTIONS

BRIGADE



Always refer to your garment care label to ensure that your uniform looks as good as new for as long as possible. We produce tough, hardwearing uniform, however it is important that you follow the care labels correctly to ensure you get the best out of your purchase.

- Turn garments inside out to wash and dry
- Fasten any buttons before washing
- Do not overload machine
- Iron inside out on a cool setting to avoid heat damage, which can cause a shiny surface on fabrics (do not iron knitwear or cuffs and welts on sweatshirts)
- Bobbling/Pilling is caused by friction and excessive heat. It is also known within the British textile industry that fabric softeners are a major cause of bobbling/pilling of the fabric. Bobbling/pilling often disappears over time and is not a reflection on the quality of the garment.

Washing symbols and their meaning

Always check the label!!



ONLINE ORDERING: www.brigade.uk.com then select the PARENTS CLICK TO ORDER HERE link
PARENT ENQUIRIES EMAIL: sales@brigade.uk.com

Order Your School Uniform Online

BRIGADE

Parents Direct Delivery



IMPORTANT SUMMER HOLIDAY ORDER INFORMATION

Place your order before **22nd July** for delivery before the start of term



SUPPLYING SCHOOLS Since 1990

www.brigade.uk.com

Register today to avoid missing out on Brigade promotions or important notifications by logging onto www.brigadeparents.info

HOW TO MEASURE YOUR CHILD

Measure the actual body measurements as this is far more accurate than measuring over clothes.

CHEST: Measure around the chest at the fullest part, placing the tape close up under the arms.

COLLAR: Measure around the base of the neck where the collar sits, inserting two fingers between the neck and tape to allow growth

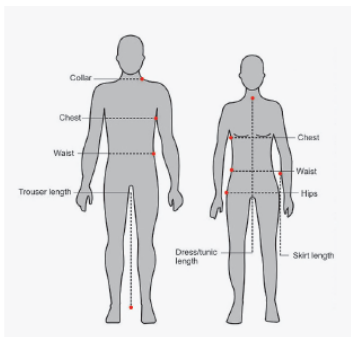
WAIST: Measure around the natural waistline.

TROUSER LENGTH: Measure the inside leg from crotch to floor without shoes on.

HIPS: Measure around your hips, 20cm (8") below your natural waistline.

SKIRT LENGTH: Measure from the waist down to where you would want the hem

DRESS & PINAFORE LENGTH: Measure from nape of neck to length required.



PRIMARY UNIFORM - SIZE COMPARISONS

Brigade Sweatshirts and Sweatshirt Cardigans/Polo Shirts/T-Shirts

Chest	22"	24"	26"	28"	30"	30/32"	32"	34"
Age	2-3	3-4	5-6	7-8	9-10	9-11	10-11	12-13

Knitwear Jumpers (Acrylic, 50/50 and Contrast Stripe)

Chest	22"	24"	26"	28"	30"	32"	34"	36"
Age	2-3	3-4	5-6	7-8	9-10	11-12	13-14	15-16

Blazers

Chest	22"	24"	26"	28"	30"	32"
Age	2-3	3-4	5-6	7-8	9-10	11-12

PE Shorts

Waist	14/16"	18/22"	22/24"	26/28"	30/32"
Age	3-4	5-6	7-8	9-11	12-13

PLEASE NOTE:
The sizing comparisons are for guidance only and are NOT applicable to all our products.

SENIOR UNIFORM - SIZE COMPARISONS

Blazers

Chest	28"	30"	32"	34"	36"	38"	40"	42"	44"	46"	48"	50"
Age	7-8	9-10	11-12	13-14	15-16							
Female	6	8	10	12	14	16	18	20	22	24	26	28
Male												

Knitwear Jumpers (Acrylic, 50/50 and Contrast Stripe)

Chest	28"	30"	32"	34"	36"	38"	40"	42"	44"	46"
Male	7-8	9-10	11-12	XS	S	M	L	XL	2XL	3XL
Female	6	8	10	12	14	16	18	20	22	24

Brigade Sweatshirts and Sweatshirt Cardigans/Polo Shirts/T-Shirts

Chest	28"	30"	30/32"	32"	34"	36"	38/40"	42/44"	46/48"
Age/Size	7-8	9-10	9-11	10-11	12-13	S	M	L	XL

PE Shorts

Waist	22/24"	26/28"	30/32"	34/36"	38/40"	42/44"
Age/Size	7-8	9-11	12-13	S	M	L

TIES (For Primary and Senior Schools)

Tie Style/Size	Elastic	9"	Clip on	12"	14"	16"	Tie	39"	45"	52"
School Age		Inf/Jnr		Junior	Junior	Senior		Junior	Jun/Sen	Senior

HOW TO USE THIS SERVICE

INSTRUCTIONS

1. Log onto www.brigade.uk.com
2. Click on the parents click to order button
3. Enter your child's school name
4. Select the school from the drop down list provided
5. Follow the online instructions to place your order

£3.99 delivery fee applied for all orders

IMPORTANT INFORMATION ON SUMMER HOLIDAY ORDERS

July to September is a busy time for ALL uniform providers!

Place your order BEFORE 22nd July for delivery before the start of term.

We cannot guarantee orders placed after this date will be delivered in time for the start of the new term.

ORDER SATURDAY OR SUNDAY FOR FASTER DELIVERY!

COLESHILL C OF E PRIMARY SCHOOL

PTA NEWSLETTER - SUMMER TERM 2022

The purpose of this Newsletter is to keep parents up to date on the activities arranged by the PTA and also to give you a list of events/ dates for your diary.

The Spring Term saw our first ever Lego Fire Walk sponsored event, to start the fundraising campaign for the new Trim Trail. We cannot thank the children and their parents enough. The event was fantastically supported, and along with the playground sale and the £1,000 PTA donation, the total is currently at an amazing £5,783.68!

Upcoming Events

Trim Trail Raffle

This will be launched after half term and will be our major fundraiser for the Summer Term. Look out for more details soon.

Bag 2 School

Bag2School will be collecting from Coleshill C of E Primary School on Friday 10th June. This is a date change from 6th June. Please bring your bag (or bags) and leave near the main playground gate and help us have a really good collection.

By getting involved in our **Bag2School** collection, you have an opportunity over half term to sort through your cupboards and wardrobes and donate unwanted textiles in the bag provided - this can include adults' and children's clothes, shoes (tied together please), hats, belts, handbags and soft toys, (please refer to <http://uk.bag2school.com/> for full details). In addition to raising much needed funds it will also raise awareness amongst the children of the benefits of recycling and reuse.

Please use a bin bag or similar (make sure it's watertight!) to donate your items and don't forget to ask grandparents, friends and neighbours to have a sort out as well!

The Great Coleshill Primary School Bake-Off

After a couple of years off, we will again be holding the Great Coleshill Primary School Bake Off. For those new to the school the clue is in the title and full details will be released very soon! This event will be held week commencing 27th June 2022. All monies raised will be donated to the trim trail fund.

Leavers Party

This takes place for Year 6 pupils on 15th July 2022. This will be a carnival afternoon with inflatables, slushes, ice lollies and much more. This event is funded by the PTA. More information to follow soon.

KS2 Summer Disco

The Summer Disco will be held on Tuesday 19th July 6.30-8.00pm. Entrance will be £3.00 on the door.

Friday Summer Sales

On Friday 10th, 17th, 24th June and Friday 1st July there will be ice lollies for sale on the playground after school. There may be some pop up stalls of students selling home made items too so keep your eyes peeled. Raffle tickets will also be on sale. All monies raised will be donated to the trim trail fund.

All of these events rely on a team of volunteers to ensure their success, we have scaled back our events so our very small team can run these. However, for the PTA to continue we will need more volunteers to join our committee. We do appreciate that joining the PTA and coming to meetings does not suit everyone, so we are also looking for people who can help us out at events. If you would like to join our list of volunteers please send your details to Anna on 07921506321.

Should you have any questions please leave us a message at the school office.

Many thanks

Anna Hayton and Amber Newman - Co- Chairs