



# Coleshill C of E Primary School and Nursery

*Inspiring our children to flourish and enjoy 'Life in all its fullness'*  
(John 10:10)



**BDMAT**  
Birmingham Diocesan  
Multi-Academy Trust



## Welcome back to a new term, new year and a new decade.

For all of our children, 2020 will have been the first time they have experienced a change of decade. Our oldest children in Y6 were still babies when 2009 became 2010!

A decade change is something that I've seen many times now but for our children it's an exciting unique moment to experience. As we head into 2020, our teachers will be looking forward to challenging our children to discover and learn many more new and fascinating things.

My hope is that our children enjoy school more than ever this Spring Term as they continue to flourish and enter into a 'life in all its fullness'.

### Attendance

We are delighted that so many pupils have come back strong and healthy after the holidays. Attendance has been a healthier 97.1% which has seen overall attendance move back towards our Attendance Target.

**2019-20 Whole School attendance to date 95.85%.**

**Top three classes this week;**

**2M (100%), 4G (99.54%) & 3P (99.52%)**

**Classes above 96%**

**1O (99.45%), RJ (99.21%), 6J (99.01%), 1W (98.94%), 2R (98.52%), 3J (98.10%),**

**Classes below 96%**

**5C (95.85%), 4M (93.33%), RM (93.23%), 6B (92.38%), 5FH (91.71%)**

### Upcoming Diary Dates:

6th January— INSET

20th Jan—Residential Parent Meeting 5:45pm

24th Jan—Y4 Roman Day

10-12th Feb—Y5 Residential

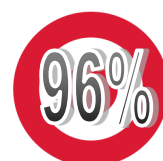
12-14th Feb—Y6 Residential

14th and 24th February—INSET

3rd/4th March—Parents' Evenings

### This Week's House Pts:

1st	<b>*Giraffes*</b>	<b>169</b>
2nd	<b>Pandas</b>	114
3rd	<b>Leopards</b>	109
4th	<b>Elephants</b>	83



**TARGET.**



## Congratulations to our Achievers of the Week!



### **Current Vacancies**

- **Nursery Bank Staff**

Due to our growing 2 year old provision we are looking to add qualified or unqualified nursery practitioners to our team of bank staff. The role will have no fixed hours but will involve covering short term and planned absence and supporting child to pupil ratios during busy times in the week.

- **Mid-day Supervisors**

We are looking to recruit an enthusiastic, flexible and reliable person who would like to work within our lunchtime supervisors team. The role is Monday to Friday; 12:00 - 13:15 and will require undertaking a variety of tasks and responsibilities.

- **Nursery Practitioner (NVQ L2/3 or equivalent)**

Following the departure of Miss Bell, we are looking to recruit an experienced Early Years practitioner with a proven track record for excellence in children development. This will be a full time post.

***If you are interested in finding out more about any of these roles please see Mrs Holliday in the school office for an application/information pack. All posts require a strong commitment to safeguarding and Keeping Children Safe in Education.***



## **INSET 14th February**

BDMAT have called for an additional INSET training day for all MAT schools to prepare for the new Ofsted Inspection Framework. Therefore the school will be closed to children on this day.

## **Mobile Phones—Children**

Please ensure that if your child brings a mobile phone for the journey to and from school that;

A) a parent permission form has been filled out and given to the office

B) Children are bringing their phone to the office **before** entering the playground gates

Any pupil phones noticed by school staff on school grounds will be confiscated and returned to parents via the office (see permission letter).

## **Mobile Phones—Adults**

Please be mindful of the 'no mobile phones' notices within the school reception area once adults have signed in and entered the building. Thank you.

## **After School Football Coaching**

We are pleased to offer after school football coaching for Reception, Year 1 and 2 children, in association with the BCFC Community Trust.



Whether your child is an aspiring footballer or has never kicked a ball before, each session will focus on learning new and exciting skills with an emphasis on fun. The experienced coaches are minimum Level 1 FA qualified, have an enhanced DBS check, are qualified in emergency first aid and have attended an FA child protection course.

Sessions will run on the main playground directly after school on Wednesdays, from 15th January until 12th February.

You can book on via ParentPay.

## **Places for Reception 2020**

The deadline for applying for a place in Reception for 2020 is Wednesday 15th January 2020. If you haven't already done so you can apply online at [www.warwickshire.gov.uk/applyforschool](http://www.warwickshire.gov.uk/applyforschool).

If you live outside Warwickshire you can still apply to our school, but need to apply via your own local authority.

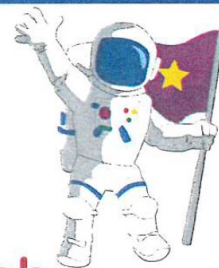
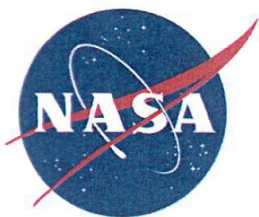
If you need more information or would like to arrange to visit the school, please get in touch with the office 01675 463672.





## Census Day Launch into Lunch Space Menu

Thursday 16th January 2020\*



**Shooting Stars Shaped Fish  
in Breadcrumbs**

or

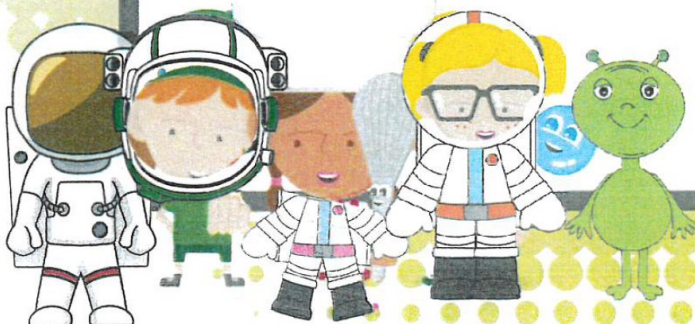
**(v) Nebula Noodles with Veggie  
Bolognaise Sauce**

**Moonwalk Wedges, Cosmic Corn,  
Solar Salad and Blast off Beans**

**(v) Black Hole Chocolate Brownie**

or

**(v) Meteor Storm Swirl Mousse**





Wingfield Road  
Coleshill  
Birmingham  
B46 3LL

Telephone: (01675) 463672

Fax: (01675) 465983

E-mail: [admin3586@we-learn.com](mailto:admin3586@we-learn.com)

Mr M Edwards  
Headteacher

## **Consultation on Changing the Priority Area within the Admission Arrangements for the 2021/22 School Academic Year**

### **Coleshill Church of England Primary School**

A Church of England Primary Academy within the Birmingham Diocesan Multi-Academy Trust (BDMAT)

**12<sup>th</sup> December 2019**

Coleshill CE Primary School would like to propose updating the school's admission priority area with effect from 1 September 2021. This follows the formal change in status of our partner school High Meadow, which took effect from September this year.

For many years, Coleshill CE Primary School had operated two entry points for pupil intake, Reception for children reaching school age and Year 3 for the thirty pupils that joined us from our partner school that was, High Meadow Infant School.

However, on 2 September 2019 High Meadow Infant School became High Meadow Community School, a single form Reception to Year 6 through primary school, with the admission of their first Year 3 class in that month.

Whilst the High Meadow Infant and Coleshill CE Primary partner association existed, it was appropriate for each school's Key Stage 1 priority area boundary to be common with the River Cole.

The location and expansion of High Meadow Community School will predominantly serve the community north of the River Cole, but Coleshill CE Primary School has also been working with Warwickshire Local Authority. In recent years we have built three new classrooms in our own Key Stage 1 to help meet the current and future needs within Coleshill and the surrounding area for additional reception school places.

The staff and governors of Coleshill CE Primary School now believe that parents / carers throughout the whole of Coleshill should have an equal opportunity to select from the three junior schools available to them. And those living to the north of the River Cole should also have the chance to select from both Catholic and Church of England faith schools.



The proposed change in our admission priority area is shown below:

## 2020 Admission Priority Area:

- The parish of Coleshill, south of the River Cole.
- In addition, the parishes of Little and Great Packington.
- The parish of Coleshill north of the River Cole for entry at 7+

## 2021 Admission Priority Area:

- The parish of Coleshill.
- In addition, the parishes of Little and Great Packington.

Whilst the main proposed changes are to remove the school entry point at Year 3 and update our admission priority area, the school has taken the opportunity for a comprehensive review of our Admission Policy. In fulfilling our statutory duty to consult at least every seven years, we are thus also proposing to update many of the notes and definitions within the policy. This is to bring it in-line with current best practice and to give readers more explicit guidance on interpretation of the admissions codes.

## **How to Respond**

This consultation will run from 12<sup>th</sup> December 2019 to 31<sup>st</sup> January 2020. You are invited to submit comments in writing about the proposal, to be received no later than noon on Friday 24<sup>th</sup> January 2020. Emails and / or letters should be addressed to the Chair of Governors Mr Carl Hindle via:

Email: [chair3586@welearn365.com](mailto:chair3586@welearn365.com)

Post:

Chair of Governors (Consultation)  
Coleshill CE Primary School  
Wingfield Road  
Coleshill  
Birmingham  
B46 3LL

For schools receiving this communication, we should be grateful if you would bring this consultation to the attention of:

- a) Your Governing Body / Local Academy Board / Trust; and
- b) Your parents / carer/ prospective parents through your newsletter and / or noticeboard.

Copies of the proposed policy can also be viewed on our school website at:  
[www.coleshillprimary.org.uk/](http://www.coleshillprimary.org.uk/)

Following the consultation period Coleshill CE Primary School will consider any comments received and how to proceed. Admission arrangements for 2021/22 will be determined before the end of February 2020.



## Coleshill C of E Primary School and Nursery

*Inspiring our children to flourish and enjoy  
'Life in all its fullness'  
(John 10:10)*

